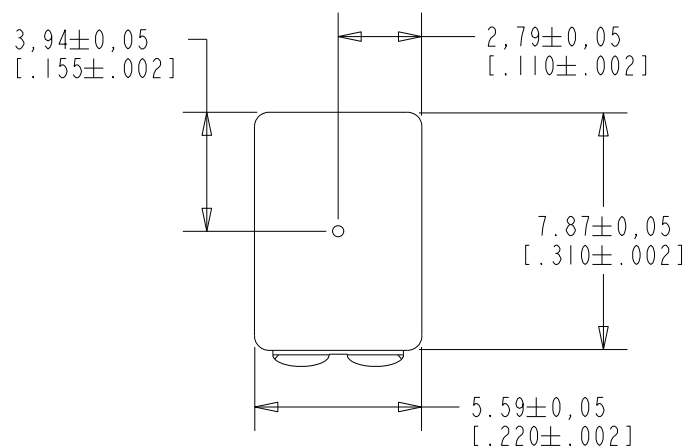


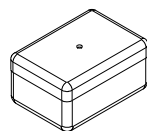
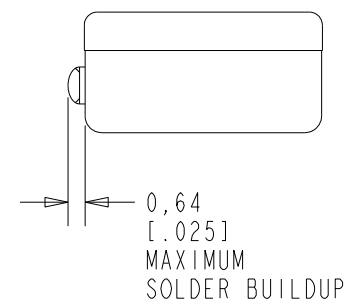
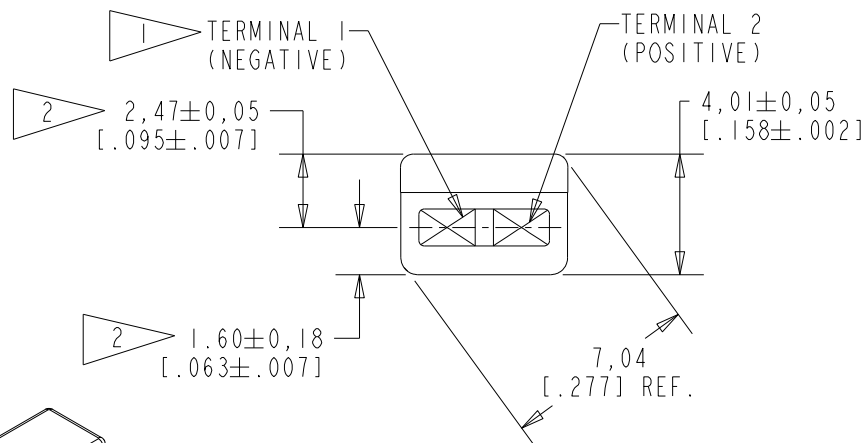
BJ-23141-134

SHT 1.1



NOTES:

- 1 A DECREASE IN PRESSURE AT THE SOUND INLET WILL CAUSE A POSITIVE VOLTAGE AT TERMINAL 2 RELATIVE TO TERMINAL 1.
- 2 LOCATED FROM TWO SURFACES FOR CUSTOMER CONVENIENCE. ONLY APPLICABLE FROM ONE SURFACE, NOT TO BE USED TOGETHER.



SCALE 2:1
NOMINAL WEIGHT
.66 GRAM

DIMENSIONS IN MILLIMETERS [INCHES]

KNOWLES CORPORATION

| Revision | C.O. # | Implementation Date | RELEASE LEVEL | REVISION |
|----------------------|-----------|---------------------|---------------|----------|
| B | PI0001158 | 1-19-17 | Active | B |
| A | CI0106311 | 8-8-07 | | |
| SCALE: 4:1 | | | DR. BY | DATE |
| DO NOT SCALE DRAWING | | | MMM | 8-8-07 |
| | | | CK. BY | DATE |
| TITLE: MICROPHONE | | | GJP | 8-10-07 |
| | | | APP. BY | DATE |
| OUTLINE DRAWING | | | GJP | 8-10-07 |
| BJ-23141-134 | | | SHT 1.1 | |

BJ-23141-134
2.1



- #### 4. SENSITIVITY

5. PORT LOCATION: ON

6. SUFFIX:

NAME: LASER MARK

DESCRIPTION: DO NOT LASER MARK

| | | | | |
|--|-----------|---------------------|----------------|-----------------|
| Revision | C.O. # | Implementation Date | RELEASE LEVEL | REVISION |
| B | PI0001158 | 1-19-17 | Active | B |
| A | CI0106311 | 8-8-07 | | |
| WHEN TEST LIMITS ARE USED TO ESTABLISH INCOMING INSPECTION ACCEPTANCE/REJECTION CRITERIA, CORRELATION OF TEST EQUIPMENT WITH KNOWLES IS ALSO REQUIRED FOR ELIMINATION OF EQUIPMENT AND TEST METHOD VARIATION | | | DR. BY MMM | DATE 8-8-07 |
| TITLE: MICROPHONE PERFORMANCE SPECIFICATION | | | CK. BY GJP | DATE 8-10-07 |
| | | | APP. BY GJP | DATE 8-10-07 |
| | | | BJ-23141-134 | 2.1 |